

[illegible]



- Manufactured in high quality steel
- Hot dip galvanised
- Highly visible retro-reflective rings
- Surface or sub-surface installation options
- Cost effective



TRAFFIC-LINE EV Charging Point Protection Guard

The **TRAFFIC-LINE EV** Charging Point Protection Guard provides protection for EV charging points from accidental damage by vehicles. A cost effective guard manufactured from high quality 60 mm Ø steel tube and hot dip galvanised for long service life. Supplied complete with retro-reflective 75 mm width rings in either blue, red or green for maximum visibility night or day.

Dimensions:

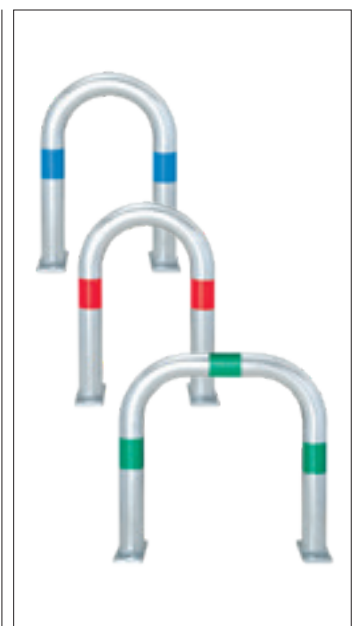
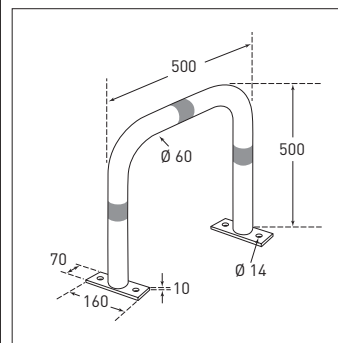
Large guard: 500 x 500 mm, 3 rings

Small guard: 500 x 360 mm, 2 rings

Installation:

- Surface fix: 800 mm
- Base plate: 160 x 70 x 10 mm
- Sub-surface fix: 800 mm high (300 mm sub-surface)

Option: Hot dip galvanised and powder coated to colour of choice with retro-reflective rings (additional cost). Available with additional electrical bonding (HD 60364/OVE E 8101) on request (additional cost).



Installation	Dimensions (mm)		Delivery weight (kg/ea.)	Reflective ring colour	Reference	Typical despatch time (working days)
	Ø/H	Width				
Surface fix	60/500	360	7	Blue	168.28.786	10 / 15 days
		500			168.24.646	
		360		Green	168.24.132	
		500			168.20.306	
		360		Red	168.25.611	
		500			168.25.170	
Sub-surface fix	60/800	360	8.5	Blue	168.24.372	
		500			168.29.954	
		360		Green	168.27.147	
		500			168.21.864	
		360		Red	168.24.530	
		500			168.28.150	
Through bolt anchor 12/120 (4 per guard)					109.24.665	1 / 2 days
Surface fixing bolts 8/100 (4 per guard)					109.17.393	

Charging Point Protection



- Manufactured from steel or stainless steel
- Eye catching designs
- Quick and easy installation
- Surface or sub-surface installation

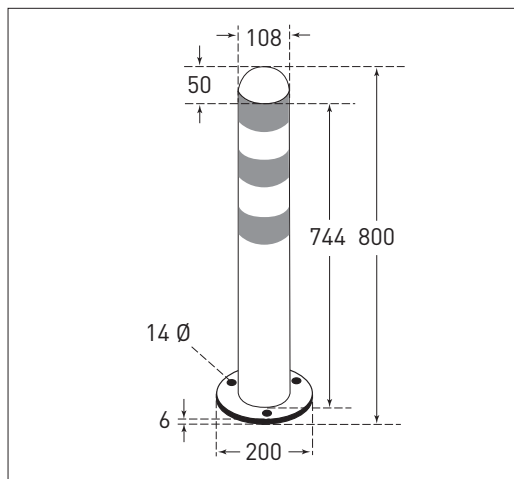
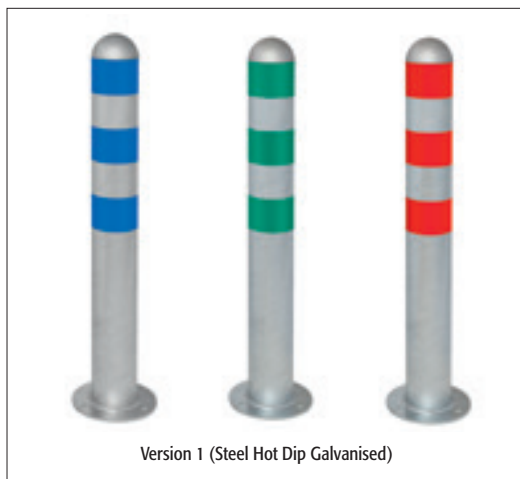
TRAFFIC-LINE EV Charging Point Protection Bollards

The **TRAFFIC-LINE** EV Charging Point Protection Bollards are designed to protect valuable EV Charging Points from accidental damage from client vehicles. Equipped with retro reflective bands for optimal colour co-ordination with the Charging Point they are highly visible day or night.

Manufactured in high quality steel or stainless steel with a sandblasted domed aluminium cap, they will provide protection for many years. They are supplied in either surface mounted or sub-surface mounted versions.

Specifications:
Dimensions (Surface Fix):
108 mm Ø x 800 mm H,
Base plate 200 mm Ø x 6 mm
Dimensions (Sub-Surface Fix):
108 mm Ø x 1,200 mm H

Version 1				Steel (Hot Dip Galvanised)		Stainless Steel	
Installation	Dimensions Ø/H (mm)	Delivery weight (kg/ea.)	Reflective ring colour	Reference	Typical despatch time (working days)	Reference	Typical despatch time (working days)
Surface fix	108/800	8.5	–	168.28.926	5 / 10 days	168.29.681	10 / 15 days
			White	168.24.924		168.27.679	
			Blue	168.26.890		–	
			Green	168.25.450		–	
			Red	168.28.789		–	
Sub-surface fix	108/1,200	8	–	168.20.923		168.25.595	
			White	168.28.402		168.26.474	
			Blue	168.20.618		–	
			Green	168.20.538		–	
			Red	168.23.713		–	
Fixing bolts 8/100 (3 per bollard)						109.17.393	1 / 2 days
Through bolt anchors 12/120 (3 per bollard)						109.24.665	



Version 1:

- Steel Hot Dip Galvanised or Stainless Steel
- Retro reflective rings 75 mm as table below

Version 2:

- Steel Hot Dip Galvanised and powder coated white
- Retro reflective rings 75 mm in blue, green, or red

Additional versions – No extra cost:

- Steel Hot Dip Galvanised and powder coated
 - Yellow (RAL 1023)
 - Black (RAL 9005)
 - Green (RAL 6009)
 - Blue (RAL 5017)
 - Anthracite grey (RAL 7016)

- Matching retro-reflective rings to your choice:

- White
- Red
- Blue
- Green
- Yellow

Available with additional electrical bonding (HD 60364/OVE E 8101) on request (additional cost)

Version 2: Steel Hot Dip Galvanised and powder coated white					
Installation	Dimensions Ø/H (mm)	Delivery weight (kg/ea.)	Reflective ring colour	Reference	Typical despatch time (working days)
Surface fix	108/800	8.5	Blue	168.23.819	10 / 15 days
			Green	168.25.354	
			Red	168.21.079	
Sub-surface fix	108/1,200	8	Blue	168.22.843	
			Green	168.27.610	
			Red	168.26.000	
Fixing bolts 8/100 (3 per bollard)				109.24.665	1 / 2 days
Through bolt anchors 12/120 (3 per bollard)				109.17.393	

Railing Systems



- Strong steel posts and rails
- Hot dip galvanised for durability
- Easily installed
- Three options Surface fix, Subsurface fix and Removable
- Two designs – URBAN and CLASSIC



TRAFFIC-LINE Railing Systems



A versatile modular railing system that is highly adaptable and extremely easy to install. Due to the modular design this system is particularly suited for uneven terrain.

Use **TRAFFIC-LINE** Railing Systems to form protected pedestrian pathways, segregate traffic lanes, barriers, queue lines etc.

Two Designs:
URBAN and CLASSIC

Components:

Steel posts include either URBAN or CLASSIC caps and lateral rails include non-conductive reinforced plastic brackets with stainless steel clamping screws. All posts are 1,000mm above ground to comply with Workplace Directives.

Brackets are adjustable horizontally to any angle above 90° and vertically (gradient) up to 45°.

Finish:

Hot Dip Galvanised or Hot Dip Galvanised and Painted.

Installation:

Sub-surface fix.
Surface fix with base plate.
Removable – Non-locking ground socket.

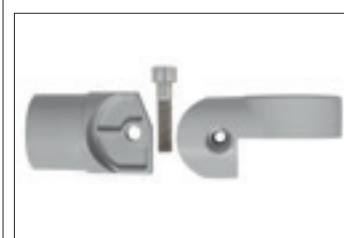
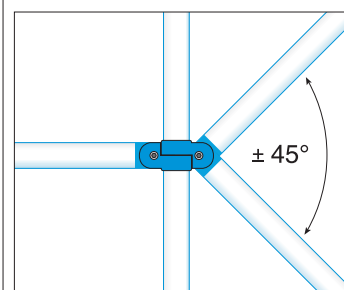
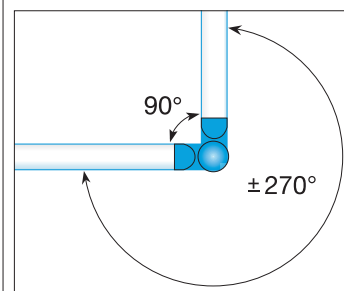
For less visual impact 48 mm Ø lateral rails are available.

Included in the price are the post caps and brackets.


Options:

Special heights, lengths, colours – on request.


For marine and coastal locations special treatment is recommended. Please ask for details.



TRAFFIC-LINE Railing System – URBAN Steel Post with Cap – 2.0 mm Wall thickness

	Finish	Colour	Sub-Surface Fix 60 x 1,330 mm, 330 mm Sub-surface or removable using ground socket			Surface Fix 60 x 1,000 mm with base plate 140 x 160 x 10 mm		
			Delivery weight (kg/ea.)	Reference	Typical despatch time (working days)	Delivery weight (kg/ea.)	Reference	Typical despatch time (working days)
	Hot dip galvanised	zinc/grey	5.5	191.10.257	15 / 20 days	6.5	191.11.788	15 / 20 days
	Hot dip galvanised and painted	red/white		191.12.087			191.10.373	
		black/yellow		191.11.064			191.11.070	
Non-lockable sub-sub-surface socket			3.0	100.10.773	15 / 20 days			
Cast iron sub-surface socket with clamping bolt			5.5	150.18.049				

TRAFFIC-LINE Railing System – CLASSIC Steel Post with Cap – 2.0 mm Wall thickness

	Finish	Colour	Sub-Surface Fix 60 x 1,330 mm, 330 mm Sub-surface or removable using ground socket			Surface Fix 60 x 1,000 mm with base plate 140 x 160 x 10 mm		
			Delivery weight (kg/ea.)	Reference	Typical despatch time (working days)	Delivery weight (kg/ea.)	Reference	Typical despatch time (working days)
	Hot dip galvanised	zinc/grey	5.5	191.10.603	15 / 20 days	6.5	191.10.815	15 / 20 days
	Hot dip galvanised and painted	red/white		191.11.532			191.11.756	
		black/yellow		191.12.494			191.12.711	
Non-lockable sub-sub-surface socket			3.0	100.10.773	15 / 20 days			
Cast iron sub-surface socket with clamping bolt			5.5	150.18.049				

Lateral Railing 60mm Ø with Brackets – 2.0 mm Wall thickness

Finish	Colour	1,000 mm; Actual 1,170 +/- 5 mm			1,500 mm; Actual 1,670 +/- 5 mm			2,000 mm; Actual 2,170 +/- 5 mm		
		Delivery weight (kg/ea.)	Reference	Typical despatch time (working days)	Delivery weight (kg/ea.)	Reference	Typical despatch time (working days)	Delivery weight (kg/ea.)	Reference	Typical despatch time (working days)
Hot dip galvanised	zinc/grey	5.5	191.11.348	15 / 20 days	7	191.11.891	15 / 20 days	8.5	191.13.077	15 / 20 days
Hot dip galvanised and painted	red/white		191.12.964			191.11.746			191.11.603	
	black/yellow		191.10.311			191.11.722			191.10.789	

Lateral Railing 48mm Ø with Brackets – 2.0 mm Wall thickness

Finish	Colour	1,000mm; Actual 1,170 +/- 5 mm			1,500mm; Actual 1,670 +/- 5 mm			2,000mm; Actual 2,170 +/- 5 mm		
		Delivery weight (kg/ea.)	Reference	Typical despatch time (working days)	Delivery weight (kg/ea.)	Reference	Typical despatch time (working days)	Delivery weight (kg/ea.)	Reference	Typical despatch time (working days)
Hot dip galvanised	zinc/grey	4.5	191.17.798	15 / 20 days	6	191.14.415	15 / 20 days	7.5	191.16.639	15 / 20 days
Hot dip galvanised and painted	red/white		191.17.857			191.16.468			191.19.773	
	black/yellow		191.14.802			191.19.929			191.13.934	

Railing Systems



- Stainless Steel Posts and Rails
- Easily installed
- Two options – Surface fix and Sub-surface fix
- Two designs – URBAN and CLASSIC
- Flexible modular design

TRAFFIC-LINE Stainless Steel Railing Systems

Manufactured in Stainless Steel these railings feature all of the attributes of **TRAFFIC-LINE** Railing System, but with the added visual appeal of Stainless Steel.

TRAFFIC-LINE Stainless Steel Railings are installed where visual appeal or difficult conditions are paramount e.g. areas of pollution, chemical works, public buildings, traffic areas, safety rails for paths, stations, airports etc.

Two Designs:
URBAN and CLASSIC.

Components:
Stainless Steel posts include either URBAN or CLASSIC caps and lateral rails include Aluminium brackets with stainless steel clamping screws. All posts are 1,000 mm above ground to comply with Workplace Directives.

Brackets are adjustable horizontally to any angle above 90° and vertically (gradient) up to 45°.

Finish:
Posts and Rails: 304 Stainless Steel
Caps and Brackets: Aluminium
Blue RAL 5017

Installation:
Sub-surface fix.
Surface fix with base plate


Included in the price are the post caps and brackets.

Options:
Special heights, lengths, colours for post caps and brackets – on request.

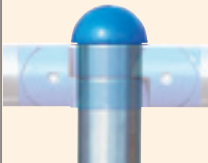
For marine and coastal locations 316 Grade is recommended and special treatment for post caps and brackets. Please ask for details.



TRAFFIC-LINE Stainless Steel Railing System – URBAN Steel Post with Cap – 2.0 mm Wall thickness

	Cap Colour	Sub-Surface Fix 60/1,330 mm (330 mm Sub-surface)			Surface Fix 60/1,000 mm; With base plate 140 x 160 x 10 mm		
		Delivery weight (kg/ea.)	Reference	Typical despatch time (working days)	Delivery weight (kg/ea.)	Reference	Typical despatch time (working days)
	Blue (RAL 5017)	5.5	193.14.227	15 / 20 days	5.5	193.15.715	15 / 20 days

TRAFFIC-LINE Stainless Steel Railing System – CLASSIC Steel Post with Cap – 2.0 mm Wall thickness

	Cap Colour	Sub-Surface Fix 60/1,330 mm (330 mm Sub-surface)			Surface Fix 60/1,000 mm; With base plate 140 x 160 x 10 mm		
		Delivery weight (kg/ea.)	Reference	Typical despatch time (working days)	Delivery weight (kg/ea.)	Reference	Typical despatch time (working days)
	Blue (RAL 5017)	5.5	193.13.650	15 / 20 days	5.5	193.17.232	15 / 20 days

Lateral Stainless Steel Railing 60mm Ø with Brackets – 2.0 mm Wall thickness

Connector colour	2,000mm; Actual 2,170 +/- 5 mm			1,500mm; Actual 1,670 +/- 5 mm			1,000mm; Actual 1,170 +/- 5 mm		
	Delivery weight (kg/ea.)	Reference	Typical despatch time (working days)	Delivery weight (kg/ea.)	Reference	Typical despatch time (working days)	Delivery weight (kg/ea.)	Reference	Typical despatch time (working days)
Blue (RAL 5017)	8.5	193.18.593	15 / 20 days	7	193.13.684	15 / 20 days	5.5	193.16.166	15 / 20 days

Scooter Parking

Scooter-Parker for 2 scooters



Elegant yet strong and practical scooter parking stand for 2 scooters, manufactured in high grade steel.
Ideal for parking places in front of public buildings, institutions and companies. Enhances the street scene.

Plastic-coated holding clamps prevent scratching of handlebars.
Holding clamps adjustable in height from 150 - 690mm to suit various scooter models.

Scooters can be secured to stand with chain or cable lock. (not provided)
Alternatively with padlock with up to 18mm hasp. (not provided).

Specification:

Post: 800 x 80 x 80 mm
Base plate: 200 x 200 x 10 mm
(Surface fix only)
Wall thickness: 3 mm
Ø of holding clamps
(closed): internal: 60 mm
external: 120 mm
Clamp colour: black

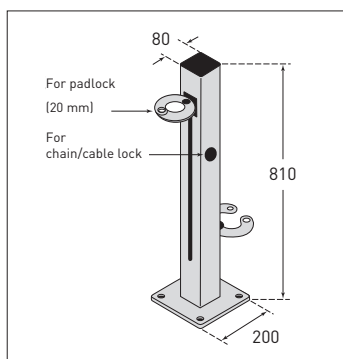
- Elegant, modern design
- Holding clamps adjustable in height
- With slots for chain or cable lock
- For (electric) scooters

Finish:

- Hot Dip Galvanised and Powder coated in anthracite iron mica coating (DB 703)

Installation:

- Surface fix (4 bolts per post)
- Sub-surface fix



Scooter parking stand for 5 scooters



Elegant yet sturdy parking stand for 5 scooters, made from formed flat steel.
For parking on both sides Unobtrusive, elegant design. Enhances the street scene.

Scooters can be secured to stand with chain or cable lock.

Specification:

Height: 400 mm
Material: flat steel, 70 x 10 mm
Ø of holding clamps
(closed): inside 60 mm
outside 120 mm

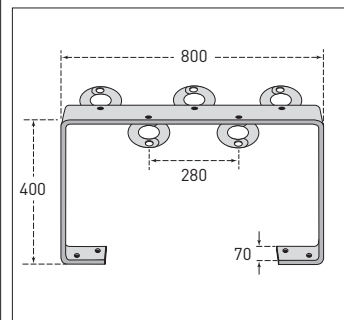
Surface finish:

- Hot Dip Galvanised and Powder coated in anthracite iron mica coating (DB703)

Installation:

- Surface fix

- Made from formed flat steel
- Contemporary design
- For parking on both sides
- For (electric) scooters



Installation	Dimensions (mm) L x W x H	Delivery weight (kg/ea.)	Reference	Typical despatch time (working days)
Surface fix	810 x 80 x 80	12	171.23.074	5 / 10 days
Sub-surface fix	200 x 200 x 10 330 mm long	5	171.24.858	

Finish	Dimensions (mm) L x W x H	Delivery weight (kg/ea.)	Reference	Typical despatch time (working days)
Hot dip galvanised	400 x 800 x 70	12	171.20.144	5 / 10 days
Hot dip galvanised + DB703			171.29.011	



- Formed from flat steel section
- Contemporary design
- Suitable for bicycles and scooters
- Enables parking on both sides

CITY GILA Bicycle Stand

Well-designed, sturdy bicycle stand manufactured from formed flat steel. Also available with cross bar (see version 2).

The clean modernistic lines are both practical and enhance the street scene.

Specification:

Height: 800 and 1,200 mm
Material: flat steel section
Dimensions: 70 x 10 mm

Version 3: With special plastic-coated holding clamps for 5 scooters located on cross bar

Scooters can be secured to stand with chain or cable lock. (not provided)
Suitable for both non-electric and electric scooters.

Alternatively with padlock with up to 18mm hasp. (not provided)

Specification:

As version 2
Ø of holding clamps (closed):
internal: 60 mm
external: 120 mm
Clamp colour: black

Finish:

- Hot Dip Galvanised
- Hot-Dip Galvanised and Powder coated in anthracite iron mica (DB 703)

Installation:

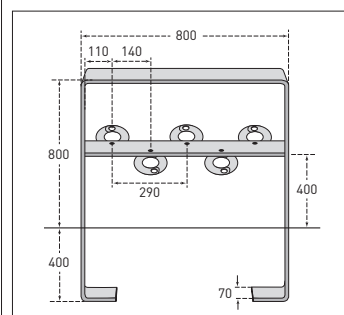
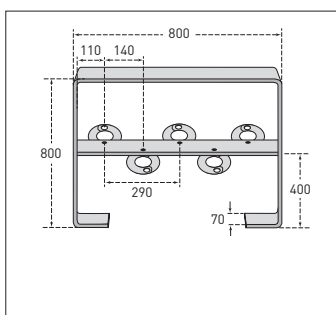
- Surface fix (four bolts per stand)



Version 1/2 Surface fix



Version 1/2 Root fix



Version	Installation	Finish	Dimensions (mm) L x W x H	Delivery weight (kg/ea.)	Reference	Typical despatch time (working days)
Version 1	Root fix	Hot dip galvanised	1,200 x 800 x 70	23.1	171.24.456	5 / 10 days
		Hot dip galvanised + DB703			171.27.205	
	Surface fix	Hot dip galvanised	800 x 800 x 70	17.1	171.21.659	
		Hot dip galvanised + DB703			171.23.908	
Version 2	Root fix	Hot dip galvanised	1,200 x 800 x 70	28.1	171.20.839	
		Hot dip galvanised + DB703			171.24.562	
	Surface fix	Hot dip galvanised	800 x 800 x 70	22.1	171.29.548	
		Hot dip galvanised + DB703			171.23.534	
Set of Clamps (for 5 Scooters) black, for version 3		black			171.20.463	

Bicycle Parking

CITY COPPA Bicycle Stand



The **CITY COPPA** Bicycle stand is of a contemporary design which will complement it's surrounding environment, yet at the same time provides a functional method of bicycle parking and securing. The **CITY COPPA** is available in two finishes and can be surface fixed or sub-surface fixed.

Strongly constructed from rectangular steel tube 60 x 40mm for long-lasting service life.

Specification:

Height:
Surface fix: 800 mm
Sub-surface fix: 1,150 mm (O/all)
Width: 700 mm

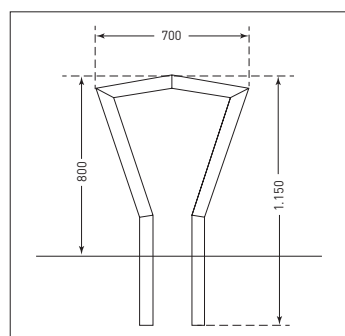
Finish:

- Hot-dip Galvanised only
- Hot-dip Galvanised and Powder coated in anthracite iron mica (DB 703)

- All steel construction
- Contemporary design
- Robust and durable
- Quickly and easily installed

Installation:

- Surface fix
- Base plate size: 300 x 140 x 10 mm
- Sub-surface fix



800 mm Above surface 700 mm width				
Finish	Installation	Delivery weight (kg/ea.)	Reference	Typical despatch time (working days)
Hot Dip Galvanised	Sub-surface fix	11.5	171.26.688	5 / 10 days
	Surface fix		171.21.382	
Hot Dip Galvanised + DB703	Sub-surface fix		171.22.675	
	Surface fix		171.25.337	

CITY VUELTO Bicycle Stand



The **CITY VUELTO** Bicycle stand is of a contemporary design which will complement it's surrounding environment, yet at the same time provides a functional method of bicycle parking and securing. The **CITY VUELTO** is available in two finishes and can be surface fixed or sub-surface fixed.

Strongly constructed from 48mm round steel tube for long-lasting service life.

Specification:

Height:
Surface fix: 800 mm
Sub-surface fix: 1,130 mm (O/all)
Width: 700 mm

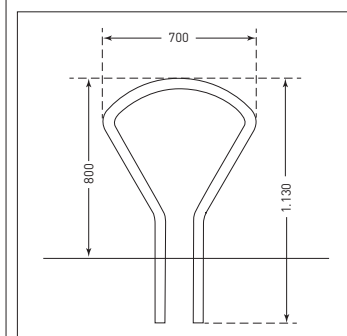
Finish:

- Hot-dip Galvanised only
- Hot-dip Galvanised and Powder coated in anthracite iron mica (DB 703)

- All steel construction
- Contemporary design
- Robust and durable
- Quickly and easily installed

Installation:

- Surface fix
- Base plate size: 300 x 140 x 10 mm
- Sub-surface fix



800mm Above surface 700 mm width				
Finish	Installation	Delivery weight (kg/ea.)	Reference	Typical despatch time (working days)
Hot Dip Galvanised	Sub-surface fix	12.5	171.29.695	5 / 10 days
	Surface fix		171.22.178	
Hot Dip Galvanised + DB703	Sub-surface fix		171.29.869	
	Surface fix		171.27.913	

CITY GIRO Bicycle Stand



The **CITY GIRO** Bicycle stand is designed to blend in with its surroundings, yet provides a functional method of securing bicycles. Available in two finishes and can be sub-surface fixed or surface fixed.

Sturdily constructed in 42 mm Ø and 70 x 70 mm Ø steel tube this product will provide outstanding service.

Finish:

Hot Dip Galvanised and Powder coated in Anthracite iron mica DB 703.

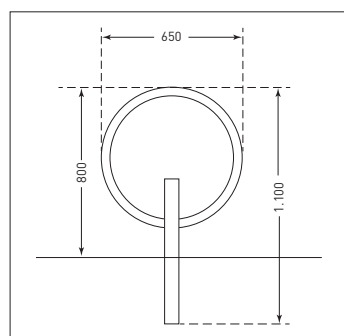
Hot Dip Galvanised only

Installation:

Sub-surface fix

Surface fix

- All steel construction
- Functional design
- Robust and durable
- Easily installed



800 mm Above surface x 650 mm OD

Finish	Installation	Delivery weight (kg/ea.)	Reference	Typical despatch time (working days)
Hot Dip Galvanised	Sub-surface fix	11.5	171.26.374	5 / 10 days
	Surface fix		171.22.579	
Hot Dip Galvanised + DB703	Sub-surface fix		171.27.900	
	Surface fix		171.22.144	

CITY TOUR Bicycle Stand



The **CITY TOUR** Bicycle stand is designed to blend in with its surroundings, yet provides a functional method of securing bicycles. Available in two finishes and can be sub-surface fixed or surface fixed.

Sturdily constructed in 48 mm Ø and 70 x 70 mm Ø steel tube this product will provide outstanding service.

Finish:

Hot Dip Galvanised and Powder coated in Anthracite iron mica DB 703.

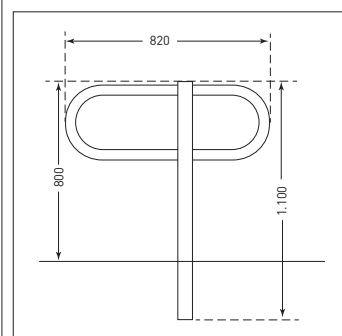
Hot Dip Galvanised only

Installation:

Sub-surface fix

Surface fix

- All steel construction
- Functional design
- Robust and durable
- Easily installed



800 mm Above surface x 820 mm Width

Finish	Installation	Delivery weight (kg/ea.)	Reference	Typical despatch time (working days)
Hot Dip Galvanised	Sub-surface fix	12.5	171.21.197	5 / 10 days
	Surface fix		171.24.673	
Hot Dip Galvanised + DB703	Sub-surface fix		171.25.361	
	Surface fix		171.22.397	

Bicycle Parking



- All steel construction
- Two fixing options
- Easily installed
- Hot dip galvanised for long life

TRAFFIC-LINE ‘Sheffield’ style Bicycle Racks For 1 Bicycle

This ever popular style provides an economic, durable and effective solution to bicycle parking. Manufactured from 48mm Ø tube and hot dip galvanised to ensure a long service life. Accessible from both sides this rack is available in two options – Surface fix or Sub-surface fix.

Applications can be found in domestic storage, company cycle parks, public spaces, schools, public and commercial buildings etc.

Surface Fix – 4 Surface fixing bolts per post				
Finish	Dimensions (mm) W x H x Ø	Delivery weight (kg/ea.)	Reference	Typical despatch time (working days)
Hot dip galvanised	710 x 800 x 48	7	169.88.041	1 / 2 days
Sub-Surface Fix – Ragged ends				
Hot dip galvanised	710 x 1,060 x 48 (260mm Sub-surface)	6.5	169.88.045	1 / 2 days
Accessories				
Surface fixing bolts 8/100 – 4 required per Surface fix style		7	109.17.933	1 / 2 days

TRAFFIC-LINE Compact Bicycle Rack for 3, 4 or 5 bicycles



The **TRAFFIC-LINE** Compact Bicycle Rack is a medium duty bicycle rack which is supplied fully assembled. Constructed in zinc plated steel for durability with wheel locators made from 16mm Ø tube, it is suitable for mountain bike tyres up to 50mm wide. Supplied complete with fixings this bicycle rack represents great value for money.

Highly suitable for schools, domestic storage, company cycle parks, small housing estates etc.

- Zinc plated steel construction
- Accessible from both sides
- Suitable for cycle tyre widths up to 50mm
- Fully assembled
- Supplied with fixings



TRAFFIC-LINE Wall Mounted Bicycle Rack



Individual bicycle rack units.

Adjustable through 180 degrees. Wall mounting – easily secured. Compact and flexible design. Zinc plated steel construction. Suitable for bicycles up to tyre width 50mm. Supplied with wall fixings. Fully assembled.

Applications:

Domestic, company bicycle parks, public spaces, public & commercial buildings, schools etc.

Specification:

Frame: Steel
Size: 335mm H x 285mm D x 90mm W (1)
16mm Ø tube wheel supports
Finish: Zinc Plated
Type: Assembled

- Zinc plated steel construction
- Adjustable through 180°
- Full assembled
- Wall mounting – easily secured
- Well-priced



Dimensions 255mm High, 330mm Depth				
Bicycle capacity	Overall width (mm)	Delivery weight (kg/ea.)	Reference	Typical despatch time (working days)
3	720	5	169.28.632	1 / 2 days
4	1,210	7	169.15.334	
5	1,320	8	169.19.382	

335mm high, 285mm deep, 90mm wide				
Bicycle capacity	Overall width (mm)	Delivery weight (kg/ea.)	Reference	Typical despatch time (working days)
1	90	2.5	169.17.113	1 / 2 days

Bicycle Parking, Street Furniture

TRAFFIC-LINE Hi-Hoop and Lo-Hoop

Bicycle Racks for 2 to 6 Bicycles



The **TRAFFIC-LINE** Hi-Hoop and Lo-Hoop Bicycle Racks are the ideal solution for heavier duty cycle storage. Manufactured in 3.5 mm gauge steel, hot dip galvanised with 19 mm Ø wheel locaters, a long service life is assured. The arches will accommodate 55 mm wide mountain bike tyres and wheels equipped with up to 140 mm diameter disc brakes.

Two Versions:

Lo-Hoop allows entry from one side only.
Hi-Hoop allows entry from either side.

These bicycle racks come flat packed for easy assembly complete with fastenings and instructions.

- Strong steel construction
- Hot dip galvanised for long life
- Tyre widths up to 55 mm
- Easy self-assembly



Hi-Hoop – 415 mm High, 390 mm Depth				
Bicycle capacity	Overall width (mm)	Delivery weight (kg/ea.)	Reference	Typical despatch time (working days)
2	700	9	169.13.535	1 / 2 days
3	1,050	12	169.18.628	
4	1,400	16	169.15.104	
5	1,750	20	169.14.981	
6	2,100	24	169.15.566	

Lo-Hoop – 415 mm High, 550 mm Depth				
Bicycle capacity	Overall width (mm)	Delivery weight (kg/ea.)	Reference	Typical despatch time (working days)
2	700	11	169.19.379	1 / 2 days
3	1,050	13	169.17.164	
4	1,400	16.5	169.14.842	
5	1,750	21	169.13.432	
6	2,100	25	169.13.416	

TRAFFIC-LINE Style DS35

Stainless Steel Litter Bins



The **TRAFFIC-LINE** Stainless Steel Litter Bins are stylish and modern in appearance, complementing their surroundings. Equally at home in town or country, these litter bins offer an elegant solution to litter disposal. Manufactured in high quality stainless steel with galvanised liners and fitted with an inbuilt lock. It is ideal for installation in parks, public places, shopping centres, retail parks etc.

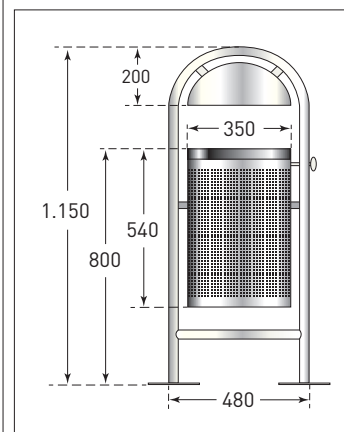
Manufactured in high-grade quality stainless steel the design DS35 comprises a hooped outer frame with a fixed dome canopy. The 35 litre inner bin (galvanised steel, plastic handles) is accessed by unlocking and tilting the outer container. The lock mechanism is operated with a triangular key. Includes drainage facility for liquids.

Installation:

Surface fix: Bolting down through two stainless base plates.

Sub-surface fix: Concreting in two ground anchors attached to base plates (accessory).

- Easily installed
- Elegant modern design
- Strong Stainless Steel construction
- Lockable



Stainless Steel

Litter Bin Style DS35	Dimensions (mm) H x W x D	Delivery weight (kg/ea.)	Reference	Typical despatch time (working days)
With inner bin 35 l	1,150 x 580 x 380	14	512.27.575	1 / 2 days

Accessories	Delivery weight (kg/ea.)	Reference	Typical despatch time (working days)
Root fixing adapter (2 per litter bin)	1.5	512.27.861	1 / 2 days



- Stylish practical design
- Steel core for added stability
- 100 recycled rubber
- Two head styles

THE BERKELEY
Recycled Bollard

THE BERKELEY Recycled Rubber Bollard is a strong yet yielding bollard reducing the risk of damage to vehicles etc. making it ideal for use in car parks, schools, play areas etc.

Manufactured from recycled rubber the **BERKELEY** bollard is produced in two head styles – pyramid shape and 45° slope. They are reinforced with a steel core and are supplied with reflective strips for night visibility. They can, on request, be equipped with circular signs with standard symbols or to your design.

Installation method	Model/ Colour	O/all Height (mm)	Delivery weight (kg/ea.)	Reference	Typical despatch time (working days)
Sub-Surface Fix – Permanent 700mm Above surface 300mm Below surface	Pyramid black	1,000	22	162.21.675	1 / 2 days
	Mitre black			162.27.092	
Sub-Surface Fix – Permanent 1,000mm Above surface 300mm Below surface	Pyramid black	1,300	23	162.28.524	
	Mitre black			162.26.571	
Circular signs on request					10 / 15 days



- Easily installed
- Four fixing options
- Choice of four diameters
- Stylish brushed finish
- Polished cap



CHICHESTER Stainless Steel Bollards

The **CHICHESTER** range of Stainless Steel Bollards are manufactured from brushed stainless steel with polished top caps, ensuring a high quality finish for many years, and are to be found in use around public & commercial buildings, retail parks, business parks, schools, public spaces, supermarkets etc.

Produced in seamless 304 quality stainless steel for durability they can be supplied with chain eyes (our Stainless Steel Chain is ideal for use with the **CHICHESTER** – see page 90). Please advise if installation is on a coastal site so that the appropriate grade can be supplied.

Optional extras:

For that finishing touch matching stainless steel collars are available for 60 and 76 mm Ø models.



Installation method and height	Ø x Wall thickness (mm)	Delivery weight (kg/ea.)	Reference	Typical despatch time (working days)
Sub-Surface Fix - Permanent 900 mm Above surface 300 mm Below surface	60 x 2	7	167.18.689	15 / 20 days
	76 x 2	9	167.17.883	
	101 x 2	10	167.50.816	5 / 10 days
	114 x 2	12	167.50.320	
Surface Fix 900 Above surface	60 x 2	6	167.18.490	15 / 20 days
	76 x 2	8	167.16.483	
	101 x 2	10	167.50.262	5 / 10 days
	114 x 2	12	167.50.390	
Removable – with Triangular key (complete with ground socket) 900 mm Above surface 300 mm Below surface	60 x 2	7.5	167.18.736	15 / 20 days
	76 x 2	9	167.18.723	
	108 x 2	10.5	167.13.750	
Removable – with Cylinder lock (complete with ground socket) 900 mm Above surface 300 mm Below surface	76 x 2	9	167.14.189	15 / 20 days
	108 x 2	10.5	167.15.768	
Removable – with Padlock (not supplied) Complete with ground socket (galvanised) 900 mm Above surface 300 mm Below surface	101 x 2	12	167.50.450	5 / 10 days
	114 x 2	14	167.50.162	
Removable – with Padlock (not supplied) Complete with ground socket (Stainless Steel) 900 mm Above surface 300 mm Below surface	101 x 2	12	167.50.711	5 / 10 days
	114 x 2	14	167.50.695	
Ground Collars – Stainless Steel	60	0.3	167.14.049	15 / 20 days
	76	0.4	167.18.323	
Triangular key – please order separately		0.2	130.12.326	1 / 2 days
Surface fixing bolts 8/100 (3 required per post-surface fix type)		0.2	109.17.393	
Chain eyes – please ask for details				15 / 20 days



- Easily installed
- Choice of two diameters
- Three fixing options
- Stylish brushed finish
- Polished 45° cap



CHICHESTER 45 Stainless Steel Bollards

The **CHICHESTER 45** range of Stainless Steel Bollards are manufactured from seamless brushed 304 quality stainless steel with an attractive 45° polished cap for that extra styling touch.

As with the **CHICHESTER** range please advise if the installation is on a coastal location so that we can select the correct grade of stainless steel.

Produced in two diameters and three fixing methods to suit a wide range of requirements.



Installation method and height	Ø x Wall thickness (mm)	Delivery weight (kg/ea.)	Reference	Typical despatch time (working days)
Sub-Surface Fix - Permanent 900mm Above surface 300mm Below surface	101 x 2	10	167.50.731	15 / 20 days
	114 x 2	12	167.50.195	
Surface Fix 900 Above surface	101 x 2	10	167.50.236	
	114 x 2	12	167.50.575	
Removable – with Padlock (not supplied) Complete with ground socket (Galvanised) 900mm Above surface 300mm Below surface	101 x 2	10	167.50.125	
	114 x 2	12	167.50.391	
Removable – with Padlock (not supplied) Complete with ground socket (Stainless Steel) 900mm Above surface 300mm Below surface	101 x 2	10	167.50.432	1 / 2 days
	114 x 2	12	167.50.551	
Surface fixing bolts 8/100 (3 required per post-surface fix type)		0.2	109.17.393	